

## Penalty Killing – Part II

Clement Jodoin

### *Penalty Kill Forecheck Systems*

#### PENALTY KILL FORECHECK SYSTEM

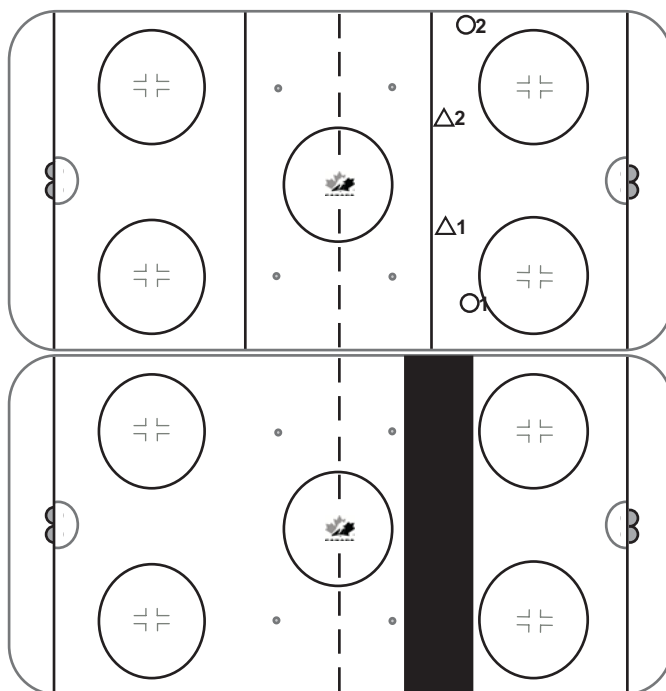
0-4

##### PROS

- ☐ 4 back
- ☐ Standing the blue line
- ☐ Creating turnovers at the blue line

##### CONS

- ☐ No turnovers in the offensive zone
- ☐ Give speed to the other team in the neutral zone
- ☐ Passive in the offensive zone



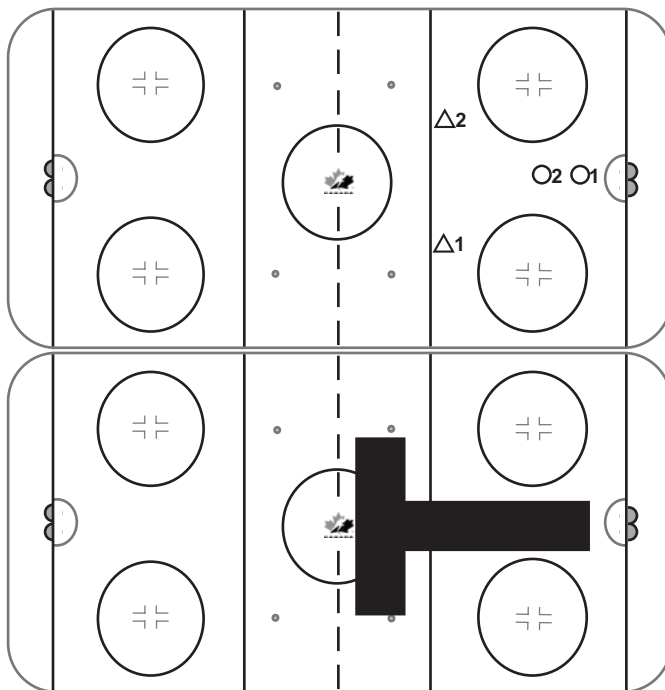
### 1-1-2 Stand Still

#### PROS

- ☐ Cover middle of the ice
- ☐ Create turnovers

#### CONS

- ☐ Give 2 options
- ☐ Hard to stand the blue line



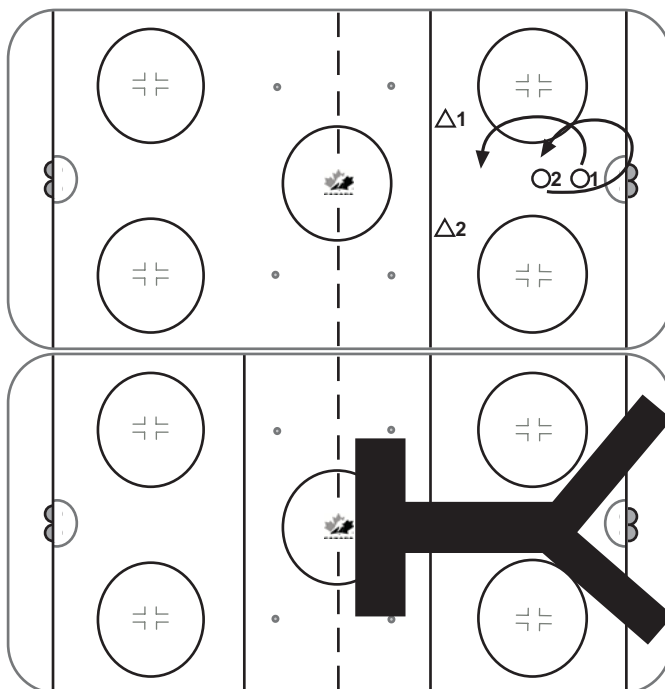
### 1-1-2 Rotation

#### PROS

- ☐ Protect the middle of the ice
- ☐ F1 and F2 are in movement
- ☐ Possible to create turnovers in the offensive zone

#### CONS

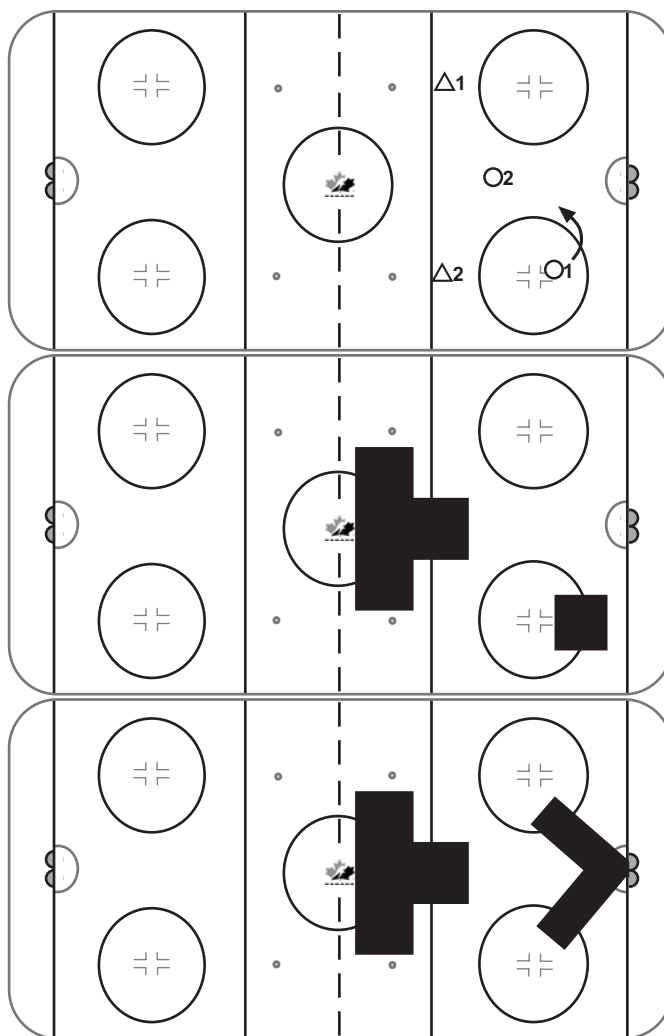
- ☐ Harder to stay up at the blue line
- ☐ Back to the play



### 1-1-2 Split in Movement

- ☐ Dictating the other team where to go
- ☐ Would like to trap them at the red line
- ☐ Easier of the D

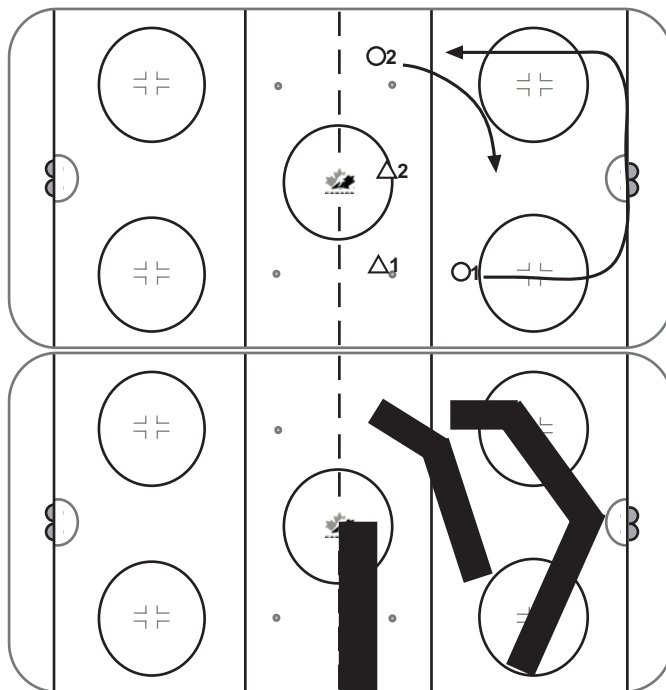
- ☐ Still 2 defensemen at the blue line
- ☐ 2 players doing the same job



### 1-3 Overskates and Takes Middle Ice

#### PROS

- ☐ Easy to read
- ☐ Possible to create turnovers
- ☐ Stand the blue line



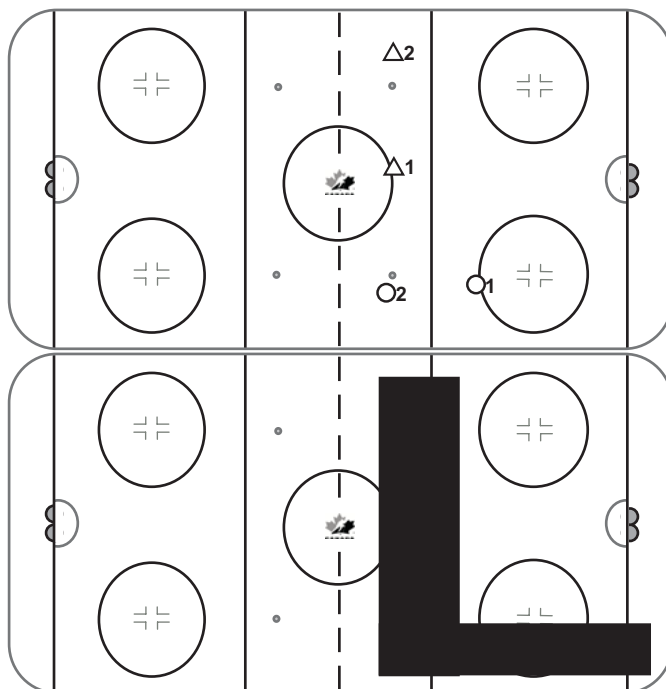
### F1 and F2 same side

#### PROS

- ☐ Cover one lane
- ☐ Stand up blue line
- ☐ Easy to read
- ☐ Dictate which way the puck has to go

#### CONS

- ☐ Passive



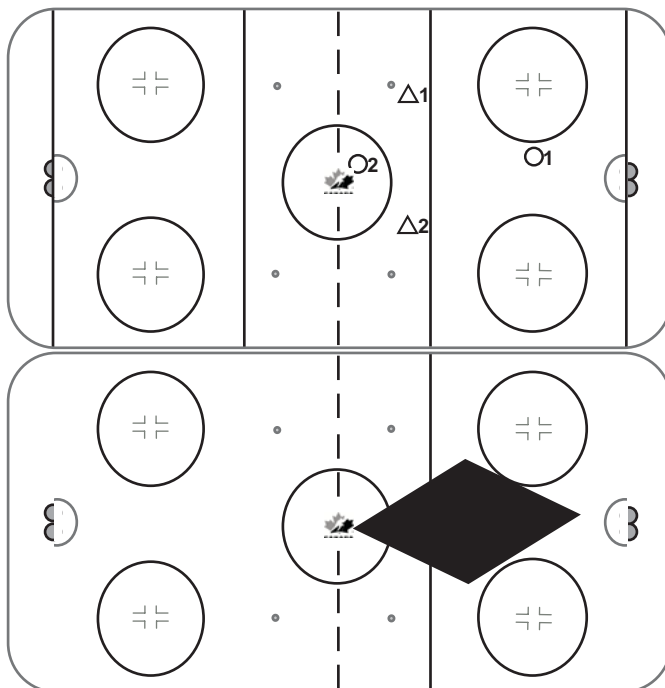
### 1-2-1

#### PROS

- ☐ Cover the middle of the ice
- ☐ Tight unit
- ☐ F2 gets the loose puck

#### CONS

- ☐ Hard to stand up the blue line
- ☐ Passive in the offensive zone



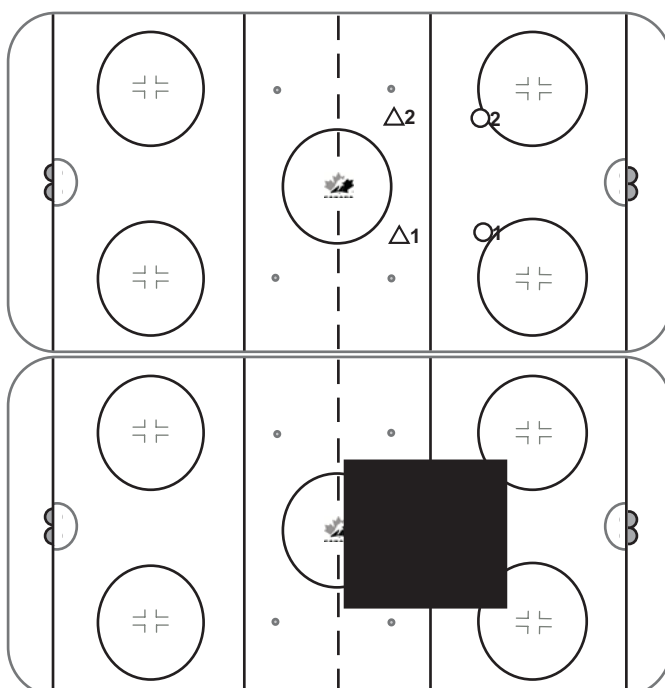
### 2-2

#### PROS

- ☐ Tight unit
- ☐ Protect the middle

#### CONS

- ☐ Passive in the offensive zone
- ☐ Hard to stand up the blue line



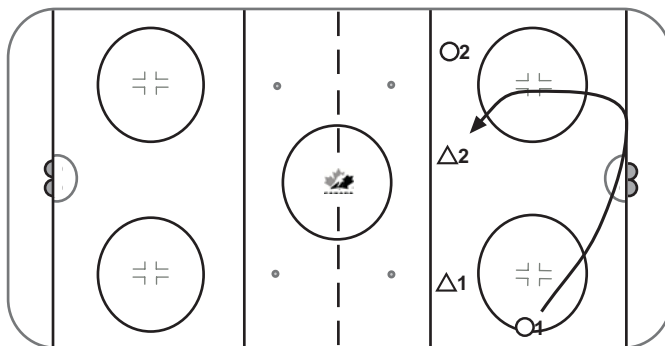
### 1-3 Board

#### PROS

- ☐ Dictating where the puck is going to go
- ☐ Standing the blue line
- ☐ Forcing the play to our defensemen

#### CONS

- ☐ No pressure
- ☐ No turnover in the offensive zone



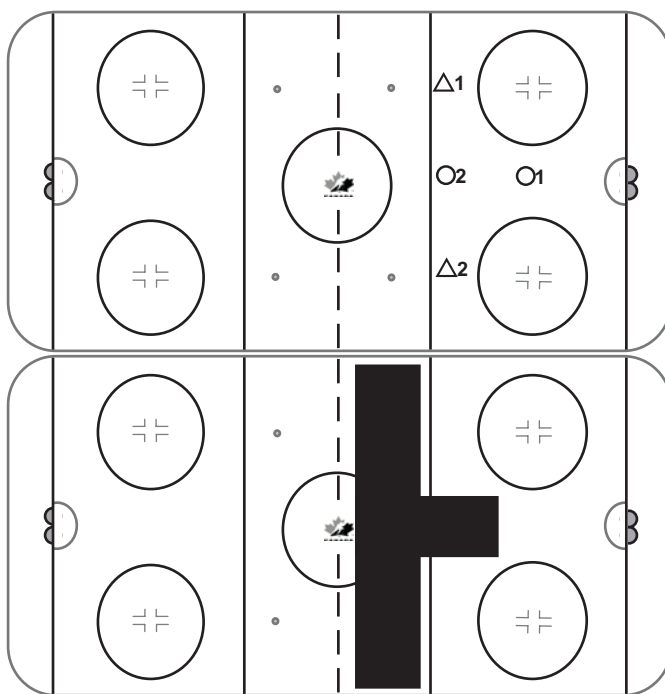
### 1-3 Middle

#### PROS

- ☐ Protect the middle of the ice
- ☐ Stand blue line
- ☐ Guide the puck carrier to the defensemen

#### CONS

- ☐ No turnover in the offensive zone
- ☐ Passive
- ☐ Sometimes the forward skates backwards



3-1

**PROS**

- ☐ Cover 3 lanes

**CONS**

- ☐ Passive in the offensive zone

